



[SYMBIANT
TECHNOLOGIES, INC.]

[N-TIER ARCHITECTURE SERVICES]

[Installation Guide]



Date	Revision	Description	Modified By	Audited By
10/6/2006	1.0	Initial Internal Release	Scott Frappier	Scott Frappier
10/9/2006	1.1	Changes to formatting and grammar.	Scott Frappier	David Hutchinson, Sean Solberg



Table of Contents

Server Setup and Specifications	2
Software Installation	3
Dynamics-NAV Client Setup	3
Application Server Manager.....	5
Service Startup	6

Server Setup and Specifications

The Dynamics-NAV Application Server that runs the nTier Architecture Services can either be installed on the database server or a separate dedicated server. Because of the posting processes and CPU time that can be consumed by the Dynamics-NAV Application Server, it is recommended to purchase a separate server.

The recommended system requirements are as follows:

Processor: 3.0 GHz Pentium IV Processor

Operating System: Microsoft Windows 2000 Server with Service Pack (SP) 4 or later; Windows 2000 Professional Edition with SP 4 or alter; Windows XP with SP 2 or later; Windows Server 2003 Enterprise Edition, Standard Edition, or Datacenter Edition with SP1 or later; Windows Small Business Server 2003 with SP 1 or later

Memory: 1 gigabyte (GB) of RAM or more

Hard Disk: 36 gigabyte (GB) or higher, 15,000 RPM or higher

Drive: CD-ROM or DVD-ROM drive

Display: Super VGA (1,024 x 768) or higher-resolution video adapter and monitor

Other Devices: Microsoft Mouse or compatible pointing device

Other Requirements: Microsoft Internet Explorer 6.0 SP1 or later; Microsoft ASP.NET 2.0 or later

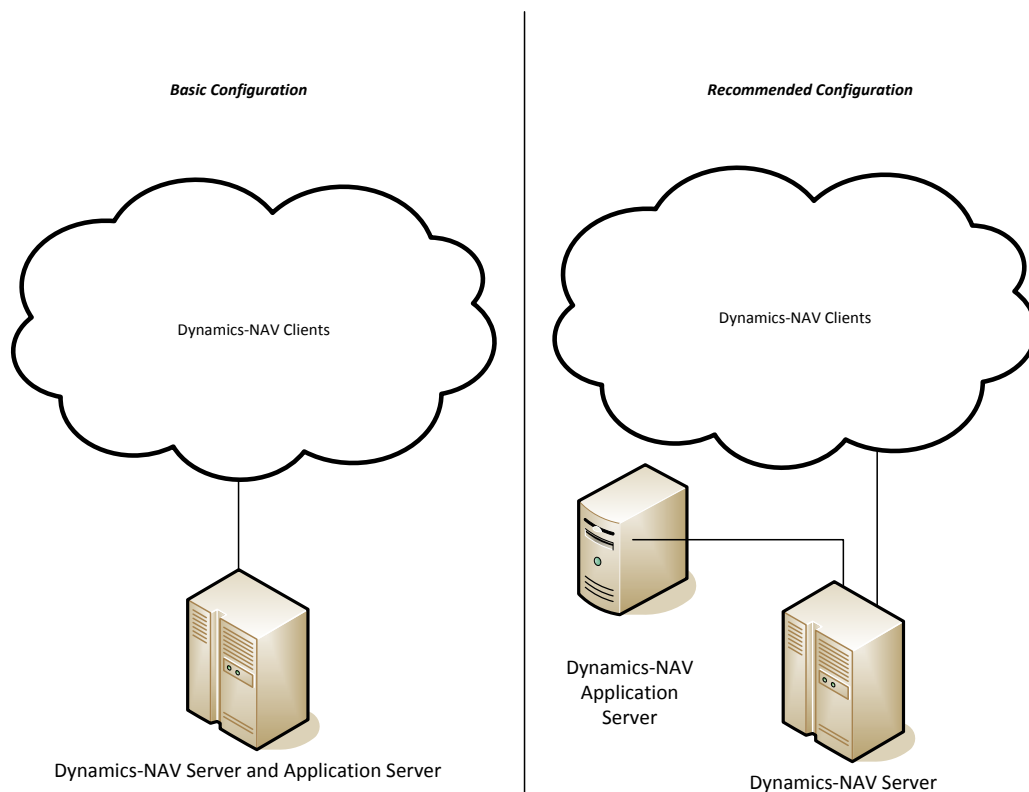


Figure 1 – Configuration examples

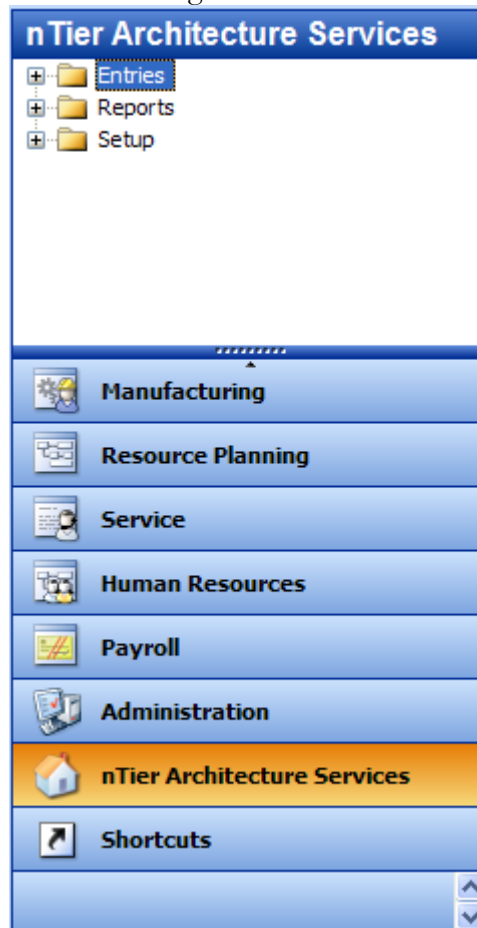
Software Installation

The software installation of the nTier Architecture Services consists of two parts. The first part is the installation of the Dynamics-NAV Application Server. Once this has been completed, the nTier objects need to be imported into the production database for the functionality to be enabled. If you have any customizations in the database, you will need to either re-add these customizations after importing the nTier objects, or have Symbiant merge the nTier objects into your database for a nominal fee.

Dynamics-NAV Client Setup

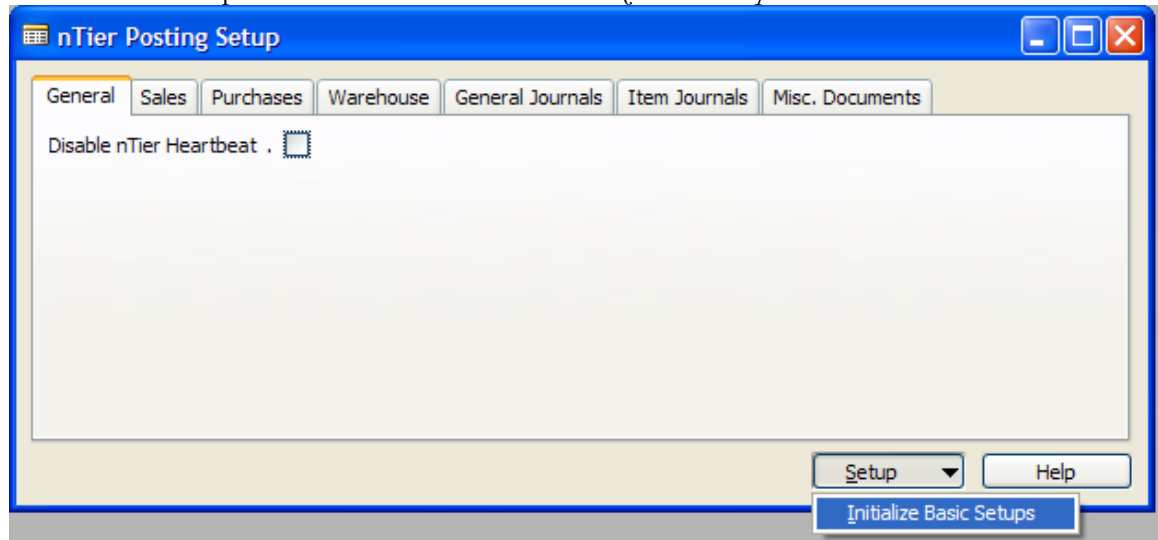
After the Dynamics-NAV Application Server and the nTier Architecture Granules have been installed, the following setup should occur:

- 1.) Open the Dynamics-NAV client and go to the nTier Architecture Services.



- 2.) Go to the Setup Folder, and click on the nTier Posting Setup.

- 3.) Click on the Setup button and click on the *Initialize Basic Setups*.



Once the basic setups have been initialized, you will see that all of the documents and journals are enabled for posting. As you click through the tabs on the nTier Posting Setup, you can disable certain functional areas so that the nTier Application Server (nTAS) will not intervene in these processes.

If you go to the nTier Parameter Setup (located in the nTier Architecture Services → Setup) you will see that a *Parameter* field has been added to the table. This default parameter is *NTIER01*. If you click on the nTier Setup and look at the *Lines*, you will see the processes that this parameter will handle.

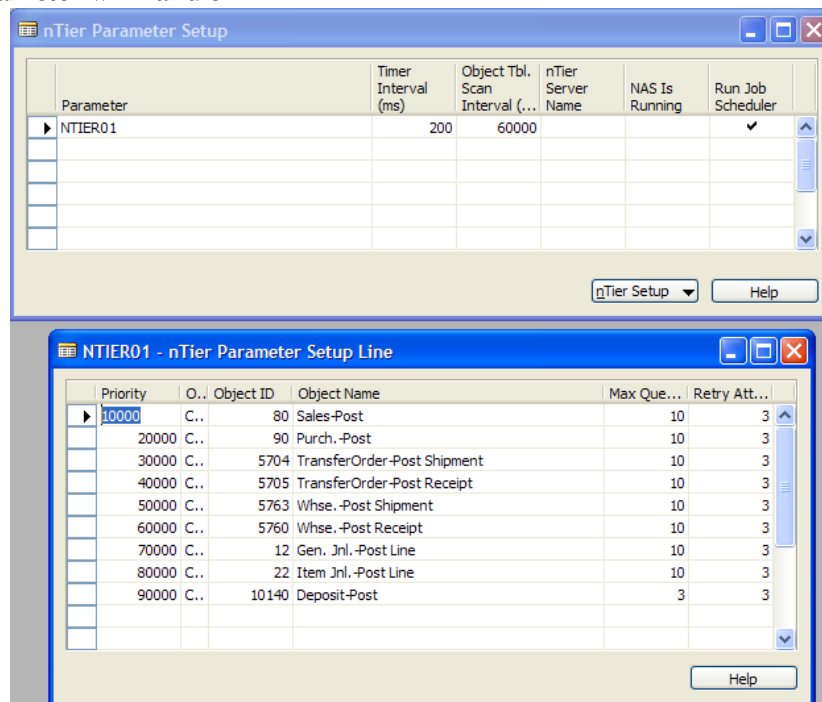


Figure 2: nTier Parameter Setup.

You can change the data within this screen to suite your installation. You can also remove items if you do not want them to be processed by the nTAS.

Application Server Manager

After you have completed the basic configuration of the nTier Architecture Services, you must setup the Application Server so that it connects using the parameter that has been defined above. To do this, go to the Microsoft Business Solutions-Navision Application Server Manager located on the start menu. Setup the application server so that it is similar to the following:

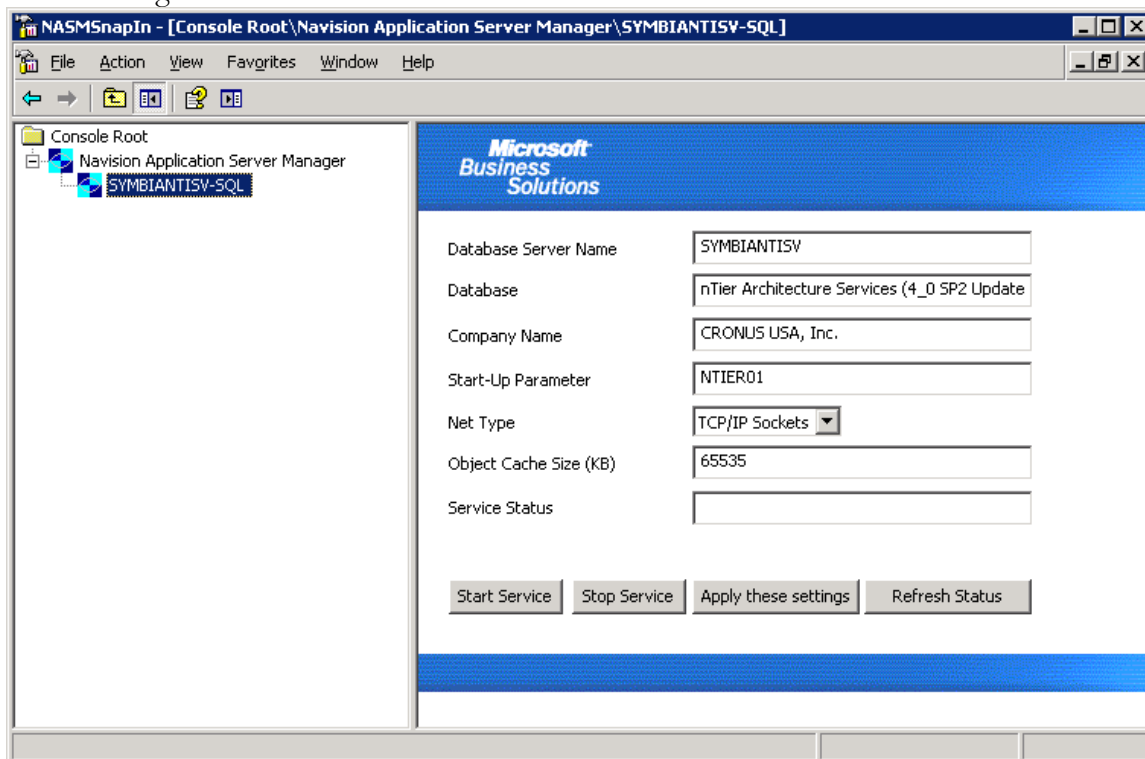


Figure 3: Microsoft Business Solutions-Navision Application Server Manager

As you can see from the illustration above, the *Start-Up Parameter* is set to the parameter that was defined in the nTier Parameter Setup. Based upon your environment, you could have multiple parameters to support multiple application servers. You do not need to have one parameter per application server (two application servers could be setup to connect with one nTier Parameter).

Service Startup

The last step in the software installation is to start the service and ensure connectivity. After starting the service, go to the event log and validate that there is an event that is similar to the one shown below.

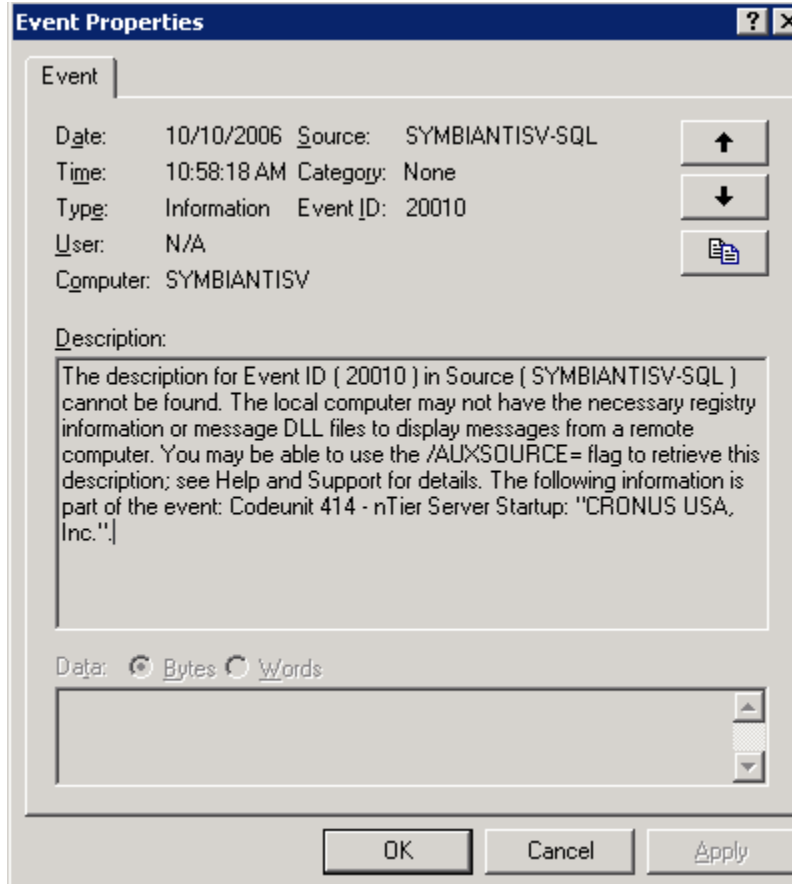


Figure 4: nTier Service Startup Message

Conclusion

The nTier Architecture Services use the Dynamics-NAV Application Server and customizations to the internal objects in order to effectively create a 3-tier environment. This document described how to setup a single application server, but remember, you can scale this application to as many application servers as you'd like to increase performance within your environment.